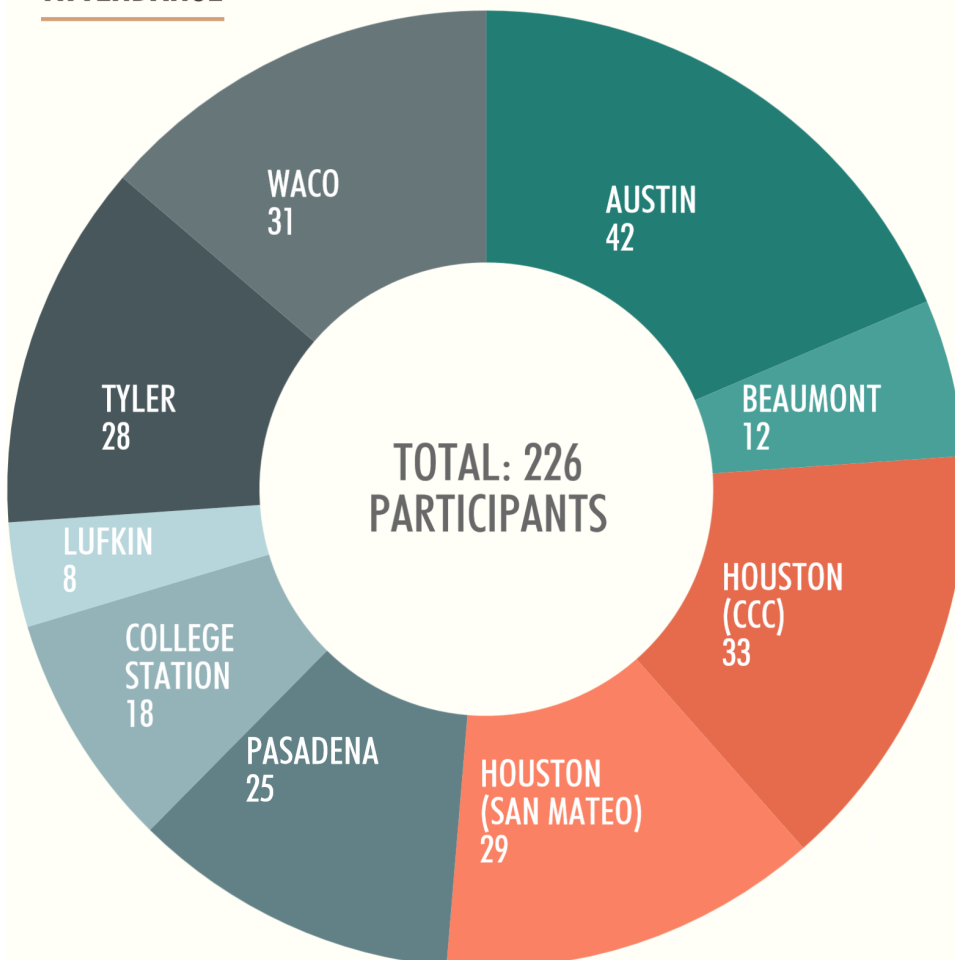


## MEETING OVERVIEW

### PURPOSE:

PROVIDE INFORMATION ABOUT EHF'S INITIATIVES AND STIMULATE CONVERSATION ABOUT THE POTENTIAL FOR TRANSFORMATIVE WORK IN COMMUNITIES

### ATTENDANCE



### HOSTS

CHRIST CHURCH CATHEDRAL  
CHRIST CHURCH TYLER  
GOOD SHEPARD EPISCOPAL CHURCH  
IGLESIA EPISCOPAL SAN MATEO  
IGLESIA EPISCOPAL SAN PEDRO  
ST. ALBAN'S EPISCOPAL CHURCH  
ST. CYPRIAN'S EPISCOPAL CHURCH  
ST. STEPHEN'S EPISCOPAL CHURCH  
ST. THOMAS EPISCOPAL CHURCH

## COMMON THEMES



## COMMUNITY ASPIRATIONS

### AUSTIN

- Convene leaders, players in the community, and grantees
- Include diverse groups
- Create a collaborative system of client information to prevent overlaps and gaps
- Identify underrepresented and core groups in communities

### BEAUMONT

- Provide a safe place for public and private stakeholders to discuss community-wide issues and find solutions
- Engage a facilitator to lead and coordinate meetings using appreciative inquiry methods
- Expand knowledge of best practices and evidence-based practices to enhance local services
- Better utilize the resources and data available through Lamar University

### COLLEGE STATION

- Engage an external coordinator in all communities
- Overcome the social isolation of poverty by fostering community relationships
- Involve businesses and social entrepreneurs in designing solutions for change
- Effectively identify and address system failures and gaps in services
- Create a space for spiritual and mental health outside of formal health systems

### HOUSTON (CCC)

- Overcome the "siloes" nature of work
- Reconcile expectations of funders and community members
- Build partnerships across sectors, especially with faith-based organizations
- Identify underrepresented and core groups in communities
- "Close the loop" with communities to ensure members feel engaged

### HOUSTON (SAN MATEO)

- Increase knowledge of neighborhoods and communities being served
- Receive training on collaboration
- Meet and exchange ideas with other non-profits
- Empower communities to solve their problems using community assets

### LUFKIN

- Include schools, county judges, law enforcement, and economic development agencies in meetings and planning
- Bridge the divide between isolated communities
- Increase the number of community health workers in the neighborhoods
- Address program sustainability
- Change "social norms" within the community through education, prevention, and policy

### PASADENA

- Become "insiders" to build trust and relationships with communities
- Provide health literacy and education
- Address the fundamental problem of poverty; look at education, job-training, affordable childcare, etc.
- Identify agencies impacting social determinants of health, and align goals
- Combat negative politicized propaganda

### TYLER

- Overcome cultural aversion to discussing controversial topics
- Address problems of affordable housing, criminal justice, and mental health stigma
- Move beyond "politics" and work on civic participation and community organizing
- Develop a common agenda and list of resources
- Identify grassroots leaders with passion and commitment

### WACO

- Bring decision-makers into meetings to prevent gridlock
- Collect and organize key data into a usable format
- Include atypical organizations in health initiatives
- Convene faith-based organizations
- See community members as "donors," not "clients"
- Establish a repository of best practices for healthy communities

## HOW CAN EHF DO DIFFERENT, NOT JUST MORE?

CONVENE COMMUNITIES INTENTIONALLY

SUPPORT CAPACITY AND INFRASTRUCTURE BUILDING IN COMMUNITIES

ADVOCATE FOR POLICY CHANGE

ASSESS COMMUNITY READINESS

CONSOLIDATE DATA ACROSS THE DIOCESE

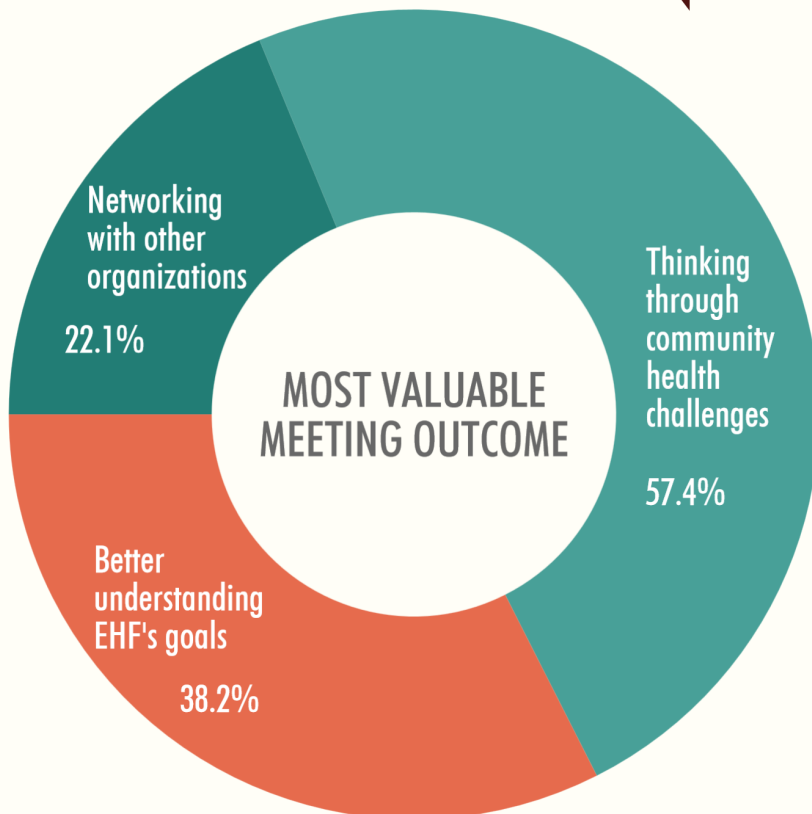
# POST-MEETING SURVEY FEEDBACK

"We each have a tendency to view things from our own world and perspective, so it helps to hear others discuss their own ideas and visions."

"My sense is that EHF has some significant changes that it can and will make in how we approach healthcare. I'd like to hear more and encourage EHF to share it all very transparently."

"EHF can be very instrumental when combining all its resources to better inform the providers. We do not know all the answers and although we may run great programs, there is always more to include in the view of the landscape. This broader perspective needs to be shared."

"The information provided at the meeting helped explain some of the reasons for certain health behaviors and the disposition of some of the vulnerable populations in this region of Texas caused by stigmatization and beliefs. I had an insight into how much value they place on available community resources and their willingness/readiness to avail themselves of such resources."



## HOW DO YOU PLAN TO USE INFORMATION FROM THE MEETING?

- FURTHER DEVELOP CONTACTS MADE
- ENGAGE IN LONG-TERM STRATEGIC PLANNING TO IDENTIFY APPROPRIATE COLLABORATIONS/PARTNERSHIPS
- CONNECT OTHER COMMUNITY ORGANIZATIONS WITH EHF AND OTHER RESOURCES
- COLLABORATE TO ADDRESS NON-MEDICAL ISSUES AFFECTING HEALTH
- CONTINUE THE CONVERSATION LOCALLY